

DESCRIPTION

A solenoid-operated, 2-way, poppet-type, normally closed, screw-in, hydraulic cartridge valve, designed to function as a load-holding or blocking valve in applications requiring low internal leakage.

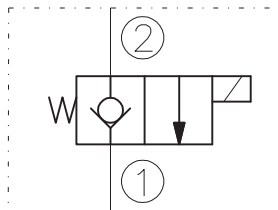
OPERATION

When de-energized, the EV10-2B acts as a check valve, allowing flow to pass from 1 to 2, while blocking flow in the reverse direction. When energized, the poppet lifts to open the 2 to 1. In this mode, flow from 1 to 2 is severely restricted. If this path is required, see model EV10-2E.

RATINGS

- Operating Pressure: 210bar
- Flow: See Performance Chart
- Internal Leakage: 0,25 cc/minute max. at 210bar
- Temperature: -20°C to 90°C with standard Buna N seals
- Coil Duty Rating: Continuous from 85% to 115% of nominal voltage
- Minimum Pull-in Voltage: 85% of nominal at 210bar
- Filtration: Recommended 25µm nominal or better
- Fluids: Mineral-based or synthetics with lubricating properties at viscosities of 7,4 to 420 cSt
- Installation: No restrictions
- Cavity: CC10-2 ; See "CAVITIES AND BODIES" brochure

SYMBOL



CAVITY

See "CAVITIES AND BODIES" brochure

TO ORDER

EV10-2B

Voltage	Seals
0 - Without coil	N - Buna N
12 - 12V DC	V - Viton A
24 - 24V DC	
11 - 110V RAC	
22 - 220V RAC	

Terminations DIN 43650.
See "Accessories" brochure

PERFORMANCE (Cartridge Only)

